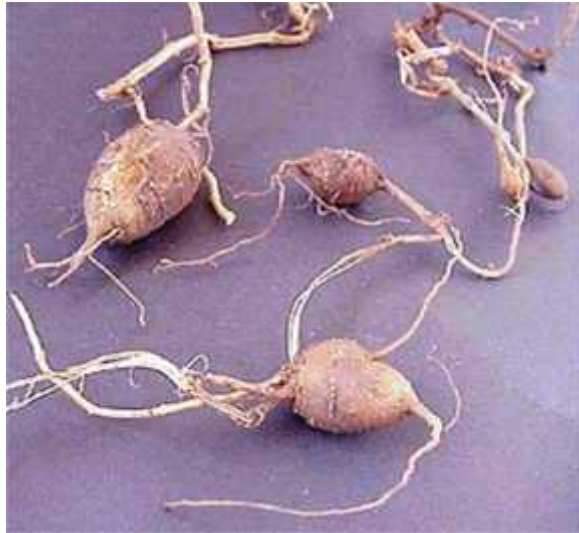


Weeds of Sweetwater Creek – Recognition and Treatment.

Climbing Dock (*Acetosa sagittata*): origin South Africa

Description: Arrow-shaped leaves, papery pinkish flowers in autumn, turnip-like tubers underground.



Habit: Covers vast areas both above, by climbing over plants, and below ground, by spreading tubers. Its flowers shed seeds which rapidly become tubers.

Treatment: Young plants are easiest as the tubers are smaller and can be gently lifted, but all connecting tubers must be removed as well. Older, larger plants should have the surface of the tuber scraped to expose the flesh and painted with weed-dabber (Roundup) and left in the ground. The papery flowers should also be cut off before they start dropping seed. Bag every part removed.